



Bison Bay Subdivision

Build your dream home in Altona's newest lot development!

Bison Bay features established trees, natural gas availability and is conveniently located near walking paths, the recreation centre, skate park, community gardens, Centennial Park, schools and downtown shopping.

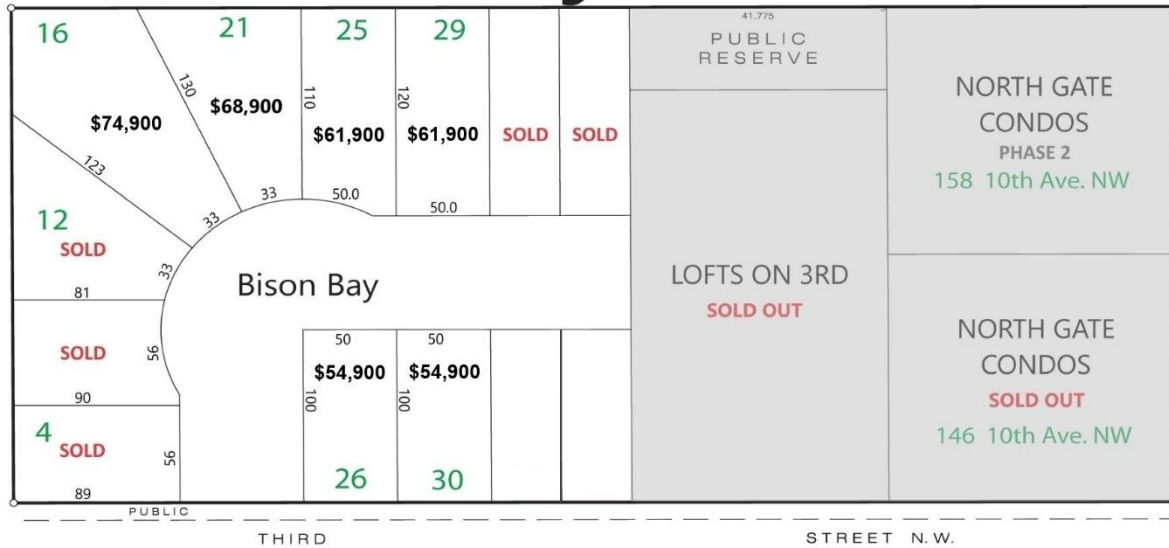
Contact your agent for more information and to reserve your lot!

Starting at \$54,900 + GST





Bison Bay Subdivision



Civic	Lot Type	Frontage (ft)	Depth (ft)	Price
4	Regular	SOLD		
8	Irregular	SOLD		
12	Pie	SOLD		
16	Pie/Irregular	33	123/130	\$74,900
21	Pie	33	110/130	\$68,900
25	Irregular	50	120	\$61,900
26	Regular	50	100	\$54,900
29	Regular	50	120	\$61,900
30	Regular	50	100	\$54,900

