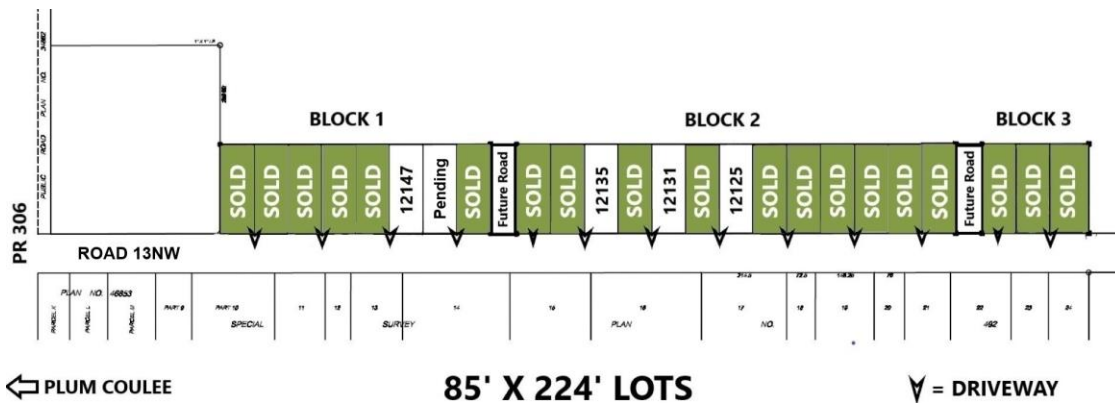


# RM of Rhineland Lots

Located in the RM of Rhineland, just east of Plum Coulee!

Multiple 85' x 224' lots available, with lots of room for a shop or additional garage! All lots are serviced with municipal water, sewer and hydro up to the property line. This area also offers Valley Fiber coverage. The water, sewer and hydro connections from the property line to the house/shop are the responsibility of the buyer.

Starting at \$94,900+GST!





**Winkler Office**

507 Main Street  
Winkler, Manitoba  
Box 130 R6W 4A4  
T 204.325.4715

**Altona Office**

2 - 306 Centre Ave E  
Altona, Manitoba  
ROG 0B3  
T 204.324.5900

[choicerealtyltd.com](http://choicerealtyltd.com)

**Block 1**

Civic Address	Lot #	Frontage (ft)	Depth (ft)	Price
12157	<b>SOLD</b>			
12147	6	85	224	\$94,900
12145	<b>Pending</b>			

**Block 2**

Civic Address	Lot #	Frontage (ft)	Depth (ft)	Price
12135	3	85	224	\$94,900
12131	5	85	224	\$94,900
12129	<b>SOLD</b>			
12125	7	85	224	\$94,900
12121	<b>SOLD</b>			



Your friends in real estate.