

# Lynnwood Bay Condos

217 LYNNWOOD BAY, ALTONA

**Starting at \$234,900**



Construction is underway and anticipated possession is end of May/beginning of June 2026!

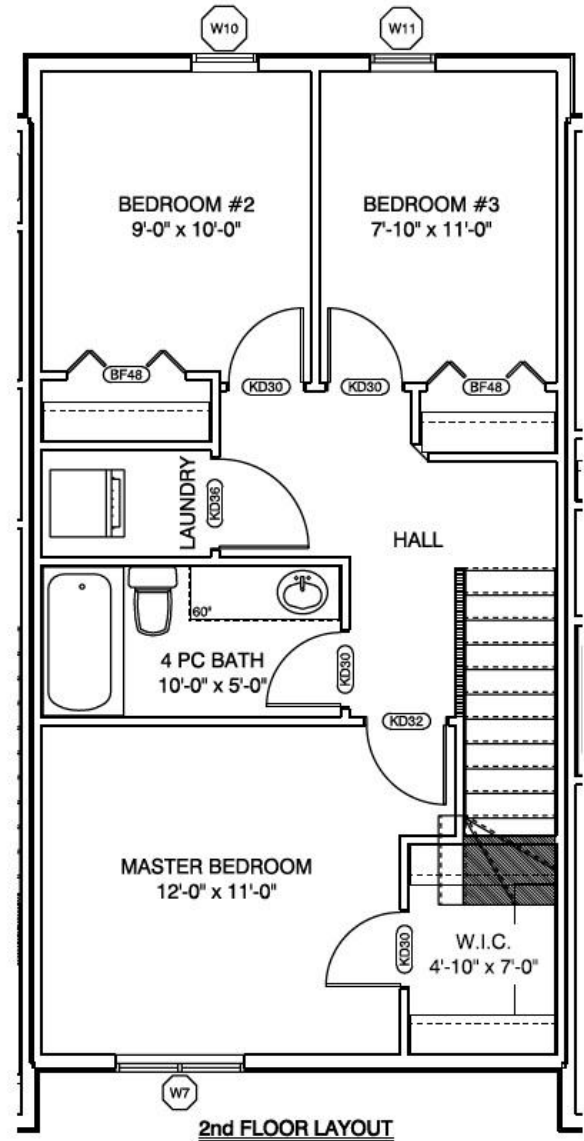
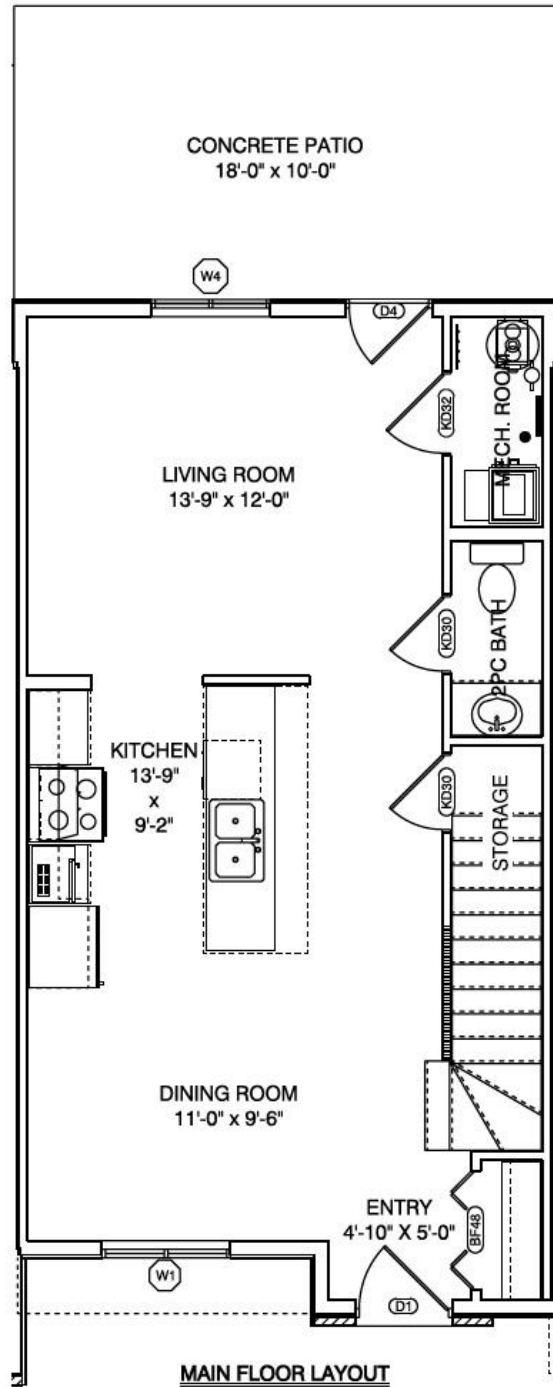
## What's available

Unit #	Legal Description	Square footage	Condo Fees	Price
10	10-58761	1,228	\$145	<b>SOLD</b>
11	11-58761	1,204	\$145	\$234,900
12	12-58761	1,204	\$145	<b>SOLD</b>
13	13-58761	1,204	\$145	<b>Pending</b>
14	14-58761	1,228	\$145	<b>SOLD</b>

- Prices include net GST
- Any offers must include a minimum deposit of \$5,000
- A one-time fee of \$750 to be paid on possession for initial building insurance.
- Condo fees are per month and cover:
  - Contribution to Reserve Fund
  - Insurance – Common Area
  - Snow removal/Lawn Care
  - Building Management

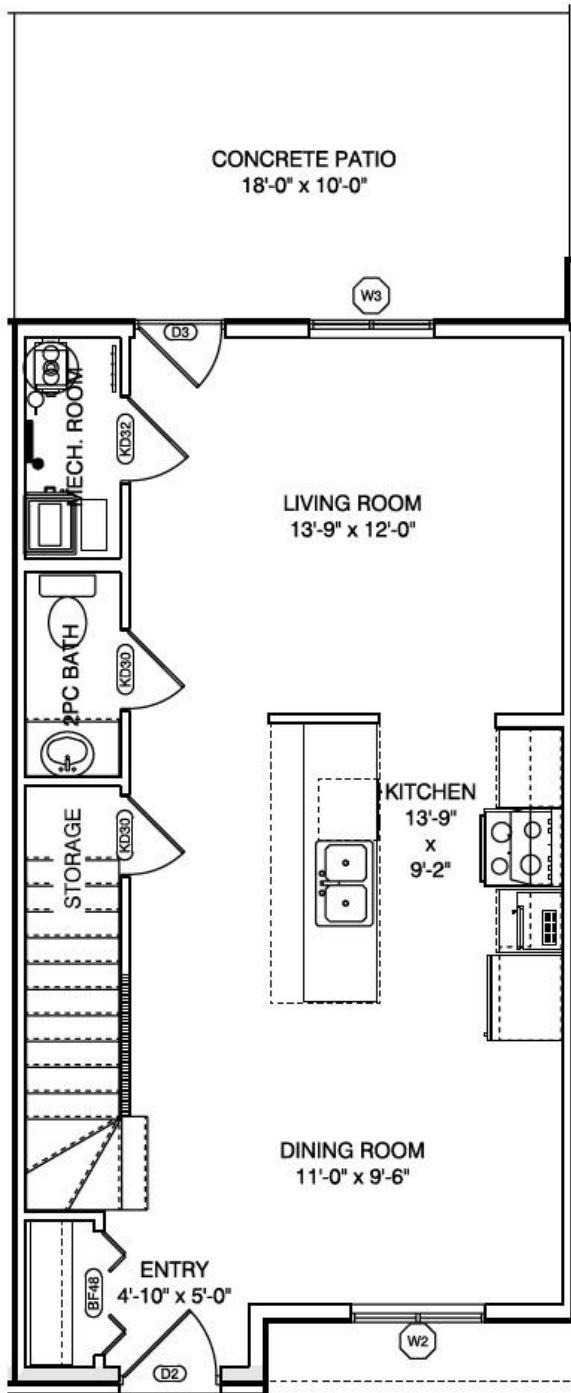


# Floorplans

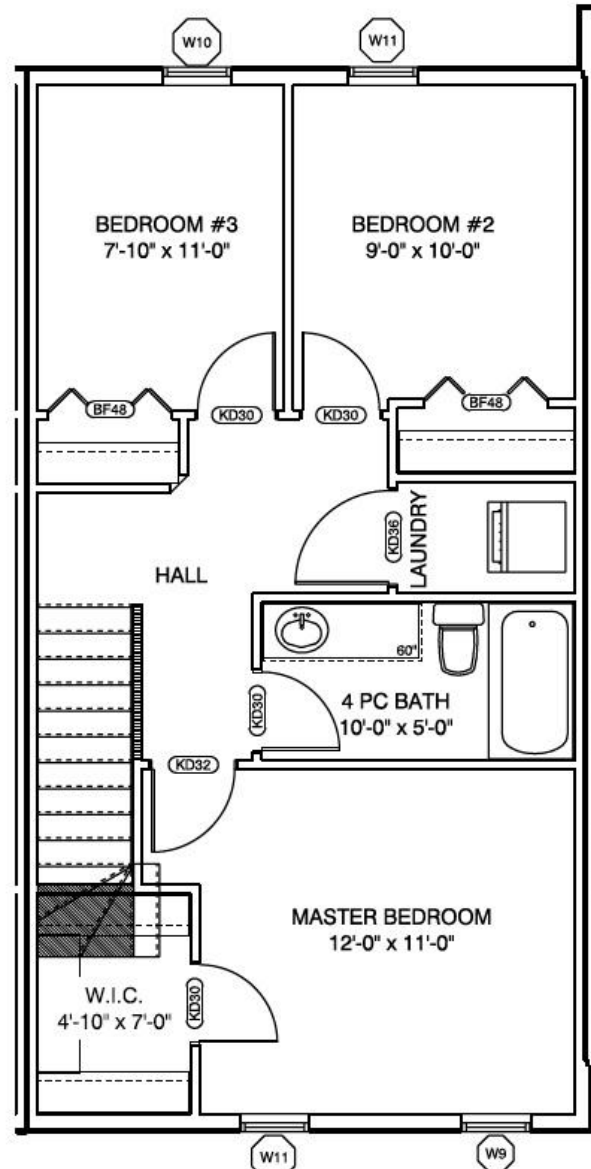


UNIT #11		
MAIN FLOOR	2nd FLOOR	TOTAL
592 ft²	612 ft²	1,204 ft²





**MAIN FLOOR LAYOUT**



**2nd FLOOR LAYOUT**

UNIT #13		
MAIN FLOOR	2nd FLOOR	TOTAL
592 ft²	612 ft²	1,204 ft²

